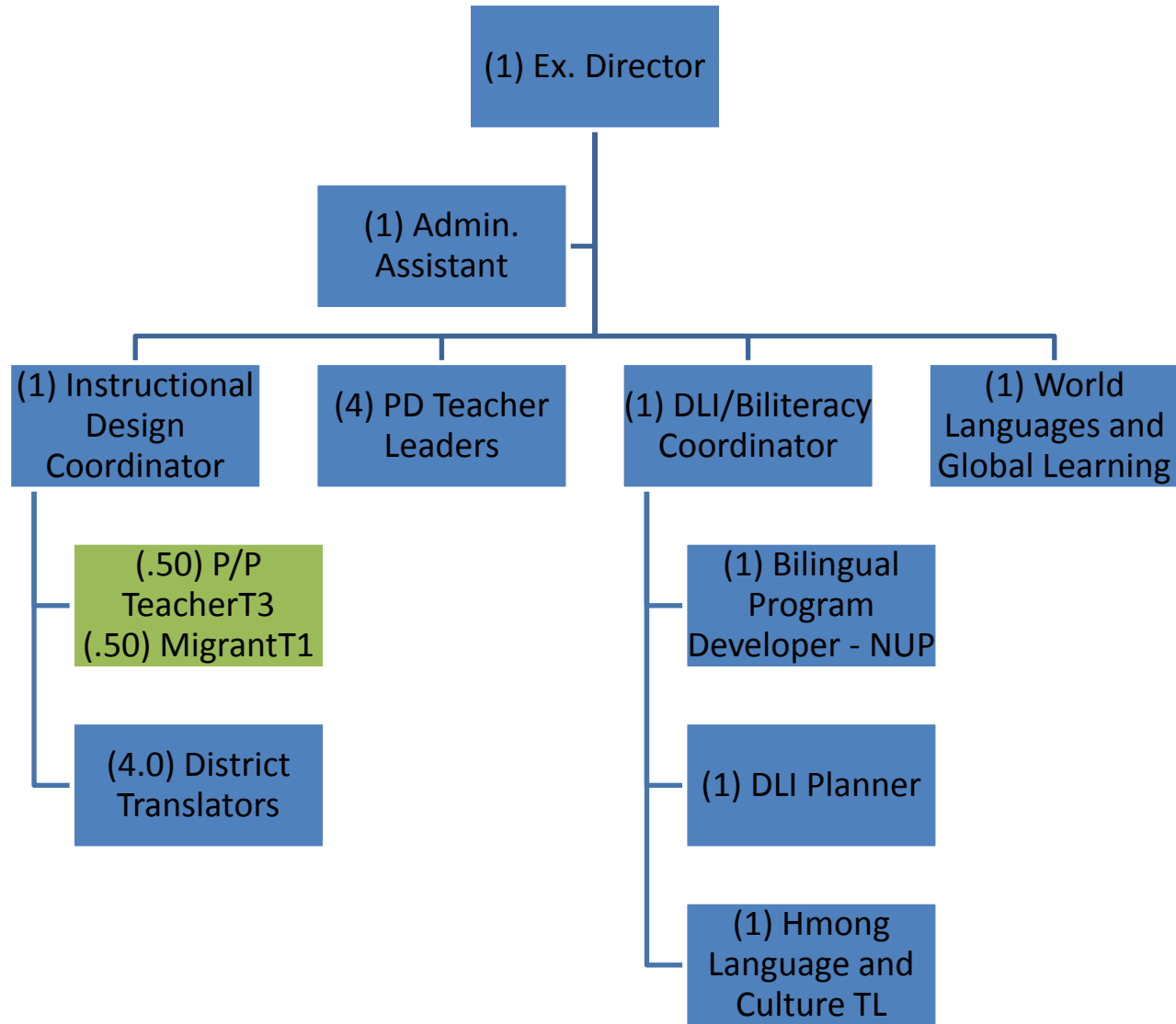


**2015-2016 OMGE Team**



### OMGE Organization Chart with Names

Executive Director	ESL/DBE/DLI	Dr. Silvia Romero-Johnson (overall department direction, bilingual teacher hiring, ELL Plan planning, implementation, annual reviews, and evaluation; overall program design; bilingual and ESL staff hiring; COMP development and evaluation; SIP support; and overall community outreach.	Administrator
(1.0) Clerical Support		Rebeca Colegial (Overall office support)	Clerical
DLI/Biliteracy Coordinator (4K-12)	ESL/DBE/DLI	Dr. Teresa Carranza (4K-12 DBE/DLI program planning, development of guidance documents, admission and lottery procedures)	Administrator
Instructional Design Coordinator (12-month)	Compliance	Jennifer Klutterman (Compliance, EOR, POS, Instructional design, BRS hiring, PD and support, enrollment)	NUP
(1.0) Bilingual Program Developer (12-month)	DBE/DLI	1.0 Gabi Bell (Bilingual program developer, curriculum development, PD on curriculum)	NUP
(1.0) DLI Planner	DBE/DLI	Jackie Smith (bilingual program planning with schools, parent communication),	Teacher Leader
(4.0) Teachers PD (design, delivery, online modules)	PD	Sara Huse (GLAD PD, academic language PD) Ana Salcido (GLAD PD, academic language PD) Ruthann Lewis (SIOP, ESL Redesign, Elementary/Middle/High SST support) Ben Kollasch (Oasys planning, PD, and end user support, data analysis)	Teacher Leader
(1.0) Private/Parochial – Migrant Education	ESL	1.0 Vacant (10-month) .50 T3 / .50 T1	Teacher Leader
(4.0) District Translators		1.0 Clara Barbosa (12-month, Spanish BRS translator) 1.0 Lorena Orellana (10-month, Spanish BRS translator) 1.0 Maria Benson (10-month, Spansih BRS curriculum translator) 1.0 Roberto Herrera (10-month, Spanish BRS translator, Student Services) 1.0 Chue Thao (12-month, Hmong BRS translator)	BRS
1.0 World languages	WL	1.0 Pam Delfosse (World Languages PD, SBL, GEAC, high school DLI/DBE course development, CLRP, )	NUP
1.0 Hmong Language and Culture TL	Hmong	1.0 Choua Her (Hmong community liaison, Hmong language and culture)	Teacher Leader